

# 13m WFSV

## Crew Transfer Vessel



### General characteristics

Structure	Aluminium
S/Structure Mounting	Welded
Classification	Optional
Flag	UK, MCA Workboat Code, Category I MGN280(M)

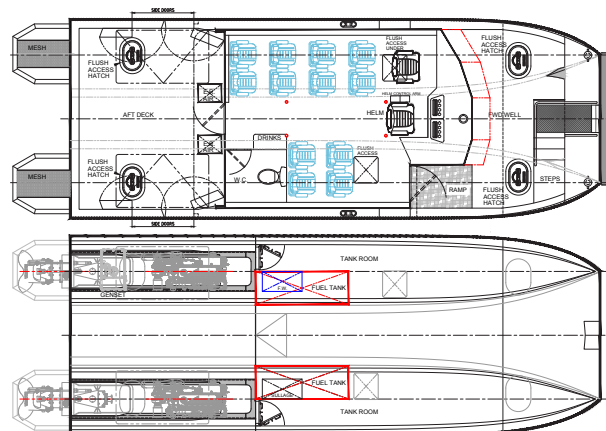
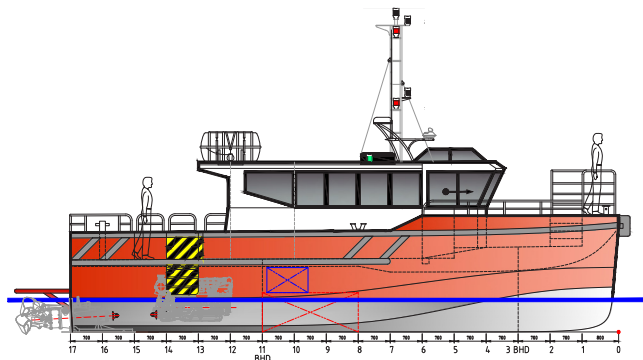
#### Dimensions

Length O.A.	13.50 m
Beam O.A.	5.50 m
Depth	1.80 m
Draft (max)	0.90 m
Displacement (lightship)	20 tonnes





# 13m WFSV Crew Transfer Vessel



## Capacities

Fuel oil	2,400 L
Fresh water	500 L
Black water	500 L
Free workdeck area	35 m <sup>2</sup>
Max deck load	1.5 t/m <sup>2</sup>
Deck cargo	1 tonne
Crew	<2 persons
Passengers	<12 persons

## Performance

Speed (max)	27.0 knots (200 litres/hr)
Speed (high)	24.0 knots (180 litres/hr)
Speed (low)	21.5 knots (140 litres/hr)

## Propulsion system

Speed (max)	2 x Iveco C90 550 hp
Total power	2 x 410 kW (2 x 550 hp)
Gearbox	2 x ZF305
Propulsion	2 x Rolls Royce FF375S

## Electrical equipment

Network	24v DC, 230V 50 Hz AC
Generator set	1 x 7.5 kW

## Deck layout

Anchor equipment	1 x 30 kg Bruce with chain and line, Electric Capstan
Bow fendering	Manuplas Foam Fender
Secondary access	TDD (Tube Docking Device) / VGRIP
Mob recovery system	Fibreight Cradle

## Life saving equipment

Life buoys	3
Life jackets	17
Life rafts	2 x 16 persons
Fire fighting	Stat-X Fi-Fi system in engine rooms Portable hand operated Fi-Fi in other areas

## Accommodation

Accommodation	12 x Saloon Seats, Galley/Mess Area, 1 x Heads, 2 x Bridge Seats
Noise levels	<75dBa

All published information is for guidance only, is not guaranteed and is subject to change. Vessel branding is based nominally on hull length and is indicative only.

## ALICAT WORKBOATS LIMITED

Southtown Road, Great Yarmouth, Norfolk NR31 0JJ  
Tel 01493 655171 [www.alicatworkboats.com](http://www.alicatworkboats.com)

